

Henry Street, Hemel Hempstead, HP3 9DU

£1,650 PCM

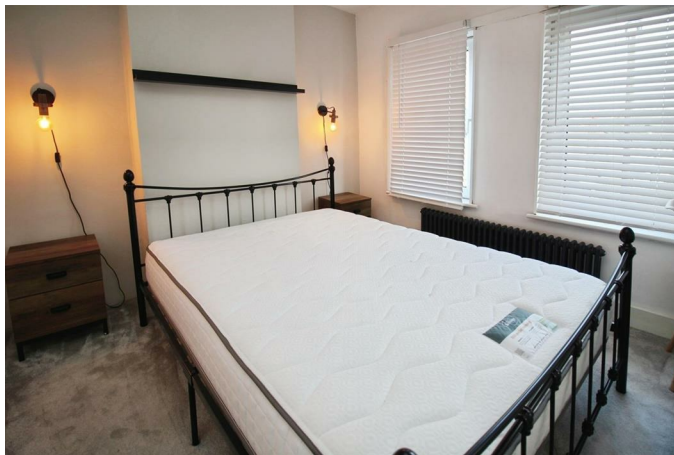
Clements Estate Agents are delighted to offer this beautiful TWO bedroom home. Located in the ever popular Apsley area the property boasts a modern touch, with a fitted kitchen, open-plan living space / dinning area. This home is offered to tenants, FURNISHED. Other features include good room sizes, family bathroom, with large, overhead shower and a low maintenance garden, complete with garden furniture. Close to local amenities and 0.6 miles away from a mainline train station, this is not one to be missed. Available NOW! Call to view!

External

Living Room 10'5" x 10'4" (3.18m x 3.15m)



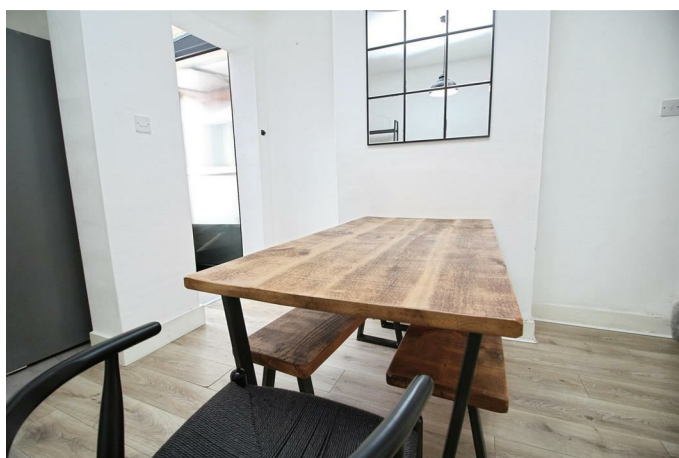
Bedroom 1 13'1" x 10'5" (3.99m x 3.18m)



Bedroom 2 11'8" x 7'7" (3.56m x 2.31m)



Dining Area 10'5" x 9'9" (3.18m x 2.97m)



Bathroom 8'4" x 6'8" (2.54m x 2.03m)



Kitchen 11'5" x 6'7" (3.48m x 2.01m)



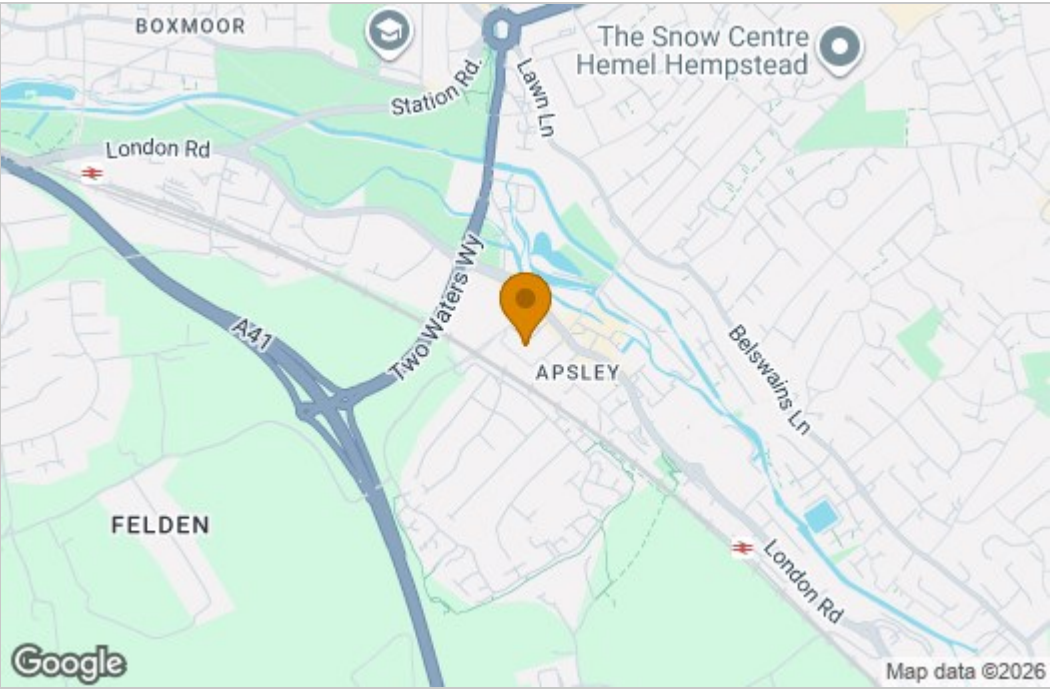
Garden



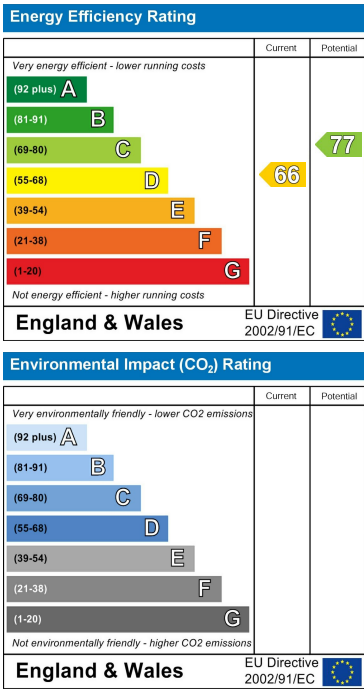
Floor Plan



Area Map



Energy Efficiency Graph



These particulars, whilst believed to be accurate are set out as a general outline only for guidance and do not constitute any part of an offer or contract. Intending purchasers should not rely on them as statements of representation of fact, but must satisfy themselves by inspection or otherwise as to their accuracy. No person in this firms employment has the authority to make or give any representation or warranty in respect of the property.